

Central Brass Company, Inc.
 3325 S. Garfield Ave.
 Commerce, CA 90040
 (800) 321-8630
 www.centralbrass.com

INSTALLATION

Tools:



Model Number: 1125 Series, 1172-D11AELS-Q,
 81172-D12AL1

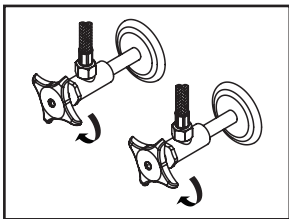


Warnings and Notes:

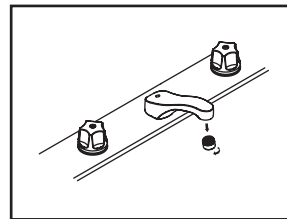
Check with local plumbing code requirements before installation.
 This product should be installed by a local listed plumber.
Do not use plumbers putty on threads.

Installation Steps:

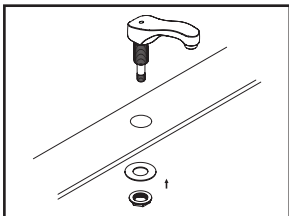
Two Handle Lavatory Faucet



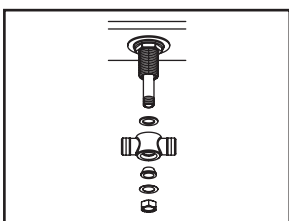
(1) Shut off water supplies. Remove old faucet. Clean mounting surface in preparation for new faucet.



(6) Important: After installation is complete, remove aerator. Turn on water supplies, turn on hot and cold handle to allow both hot and cold water to run at least one minute each. While water is running, check for leaks. Turn off handles and replace aerator.

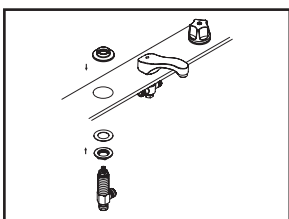


(2) Apply plumbers putty on the bottom of the spout, place spout in position on the sink, slide washer through spout shank from underneath of the sink, thread locknut onto spout shank and tighten the locknut.

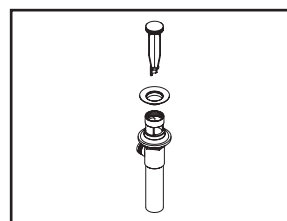


(3) Place gasket inside the center tee, slide center tee, slip-joint washer and brass washer through brass spout tube then thread hex nut onto brass spout tube and tighten hex nut.

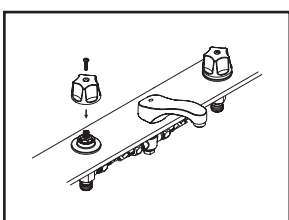
Pop-up Drain Installation:



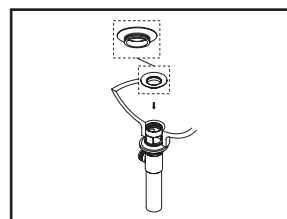
(4) Apply plumbers putty on the bottom of the escutcheon, slide locknut and gasket onto corner valve, insert corner valve through mounting hole from underneath of the sink, thread escutcheon from the top of the corner valve, adjust corner valve's height then tighten locknut from underneath with the help of a wrench. Repeat the same procedure to install the other corner valve.



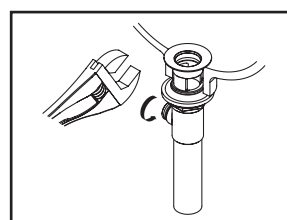
(1) Remove pop-up flange from body



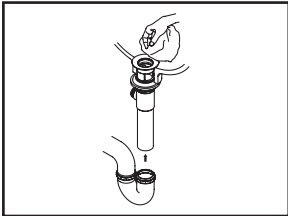
(5) Connect both corner valves outlet to center tee with supplied flex hoses. Installed handle to corner valve by tightening handle screw.



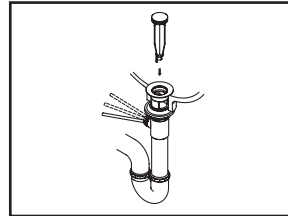
(2) Place a ring of plumbers putty on the bottom of flange.



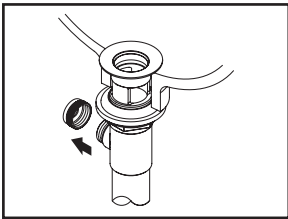
(3) Insert pop-up flange through drain hole and attach flange to body. Use Teflon tape to thread tail piece to Pop-up drain body. Ensure the pop-up outlet faces towards the back of the sink. Tighten the locknut securely with a wrench. Do not overtighten.



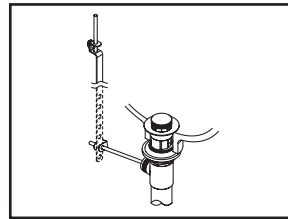
(4) Remove the excess plumbers putty. Connect the trap (check manufacturer's instructions for installation).



(6) Push pivot rod down, insert drain plug carefully. Test to ensure drain plug works properly.



(5) Remove pivot rod nut from pop-up body, ensure the washers is in place, insert pivot rod, tighten pivot rod nut back to pop-up body.



(7) Connect lift rod strap to pivot rod by using clip. Tighten the thumbscrew to connect lift rod strap to pop-up lift rod.

Central Brass
C O M P A N Y, Inc.

For more care information or trouble shooting inquiries about your Central Brass product, please call:

Central Brass Company, Inc. (800) 321-8630

Monday-Friday 8 AM to 8 PM EST (5 AM to 5 PM PST)

www.centralbrass.com