

6042STM – EVERYDAY TUB/SHOWERS

60 x 42 x 77 inches

AFR SOAKER Model #6042STM

AFR WHIRLPOOL Model #6042STMWVP



FEATURES

- Tub-shower
- Smooth tile finish
- Ergonomic backrest
- Molded toiletry shelf
- Slip-resistant textured bottom
- Left or right hand drain
- Above-floor rough
- AcrylX™ applied acrylic surface
- Lifetime limited warranty

Whirlpool Features:

- 6 directional hydrotherapy jets
- Available in White and Biscuit/Linen only
- Color matched trim
- Pneumatic on/off control
- Advanced safety suction system

OPTIONS

- Removable access panel (whirlpool models)
- Designer drain, waste & overflow
- Shower Door Series L0516

AQUATIC ADVANTAGE

- National distribution
- 7 manufacturing facilities
- Private fleet
- Centralized customer service
- Field support

COLOR OPTIONS

| Stock | Upgraded | Premium |
|-------|---------------------------------|--|
| White | Almond Biscuit/Linen Bone | Black Mexican Sand Sand Bar Sterling Silver |

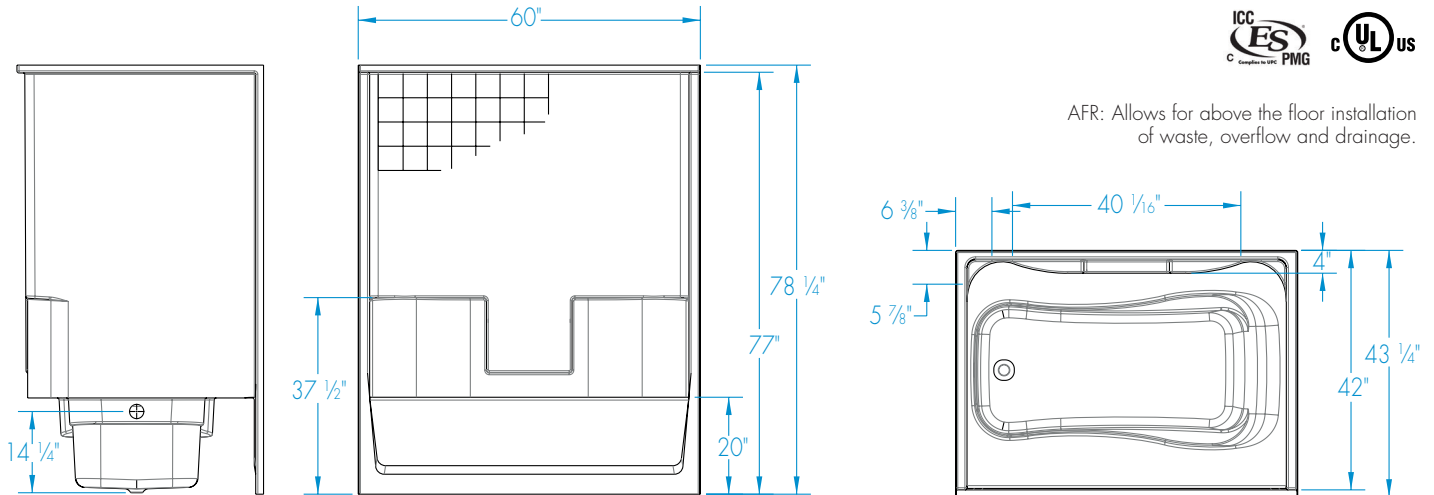


6042STM

60 x 42 x 77
inches



AFR: Allows for above the floor installation of waste, overflow and drainage.



FEATURES lbs Dimensional Tolerance $\pm 3/8"$. Dimensions needed for site preparation should be measured from the unit. Aquatic assumes no responsibility for preparatory work.

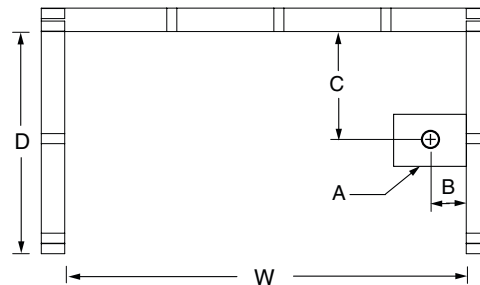
| Model # | Material | Wall Finish | Jets | Motor | Controls | Drain | Net Wt. | Pkg. Wt. |
|--------------------------|----------|-------------|------|--------|-----------|----------|---------|----------|
| AFR Soaker #6042STM | AcrylX™ | Smooth Tile | 0 | - | - | LH or RH | 160 | 165 |
| AFR Whirlpool #6042STMWP | AcrylX™ | Smooth Tile | 6 | 63 GPM | Pneumatic | LH or RH | 212 | 215 |

DIMENSIONS

| Specifications | inches |
|---------------------------------|-------------|
| Width: Overall / Net | 60 |
| Depth: Overall / Net | 43 1/4 / 42 |
| Height: Overall / Net | 78 1/4 / 77 |
| Enclosure Opening | 56 |
| Skirt Height | 20 |
| Drain Rough-In (from Back Wall) | 21 |
| Drain Rough-In (from Side Wall) | 2 1/4 |
| Drain: Diameter / Clearance | 2 / 3 3/8 |

FRAMING DIMENSIONS inches

| Type | D Depth | W Width | H Height | A | B | C |
|--------|------------|------------|-------------|---------|-------|----|
| Alcove | 43 1/4 | 60 1/8 | - | Box Out | 2 1/4 | 21 |



SUMP DATA

| Top of Drain to Bottom of Overflow | Capacity to Overflow gal | Min. Operating Capacity gal | WIDTH @ centerline | | DEPTH @ centerline | |
|------------------------------------|--------------------------|-----------------------------|--------------------|--------|--------------------|--------|
| | | | Top | Bottom | Top | Bottom |
| 12 1/2 | 65 | 50 | 54 | 44 | 26 | 23 |